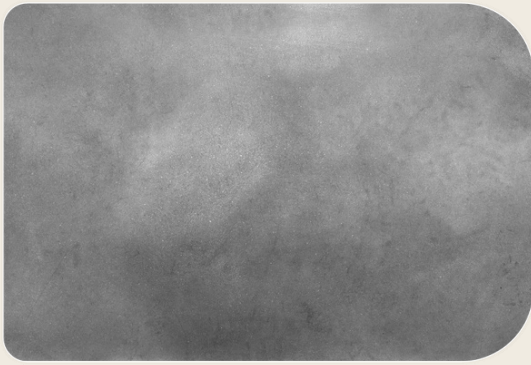
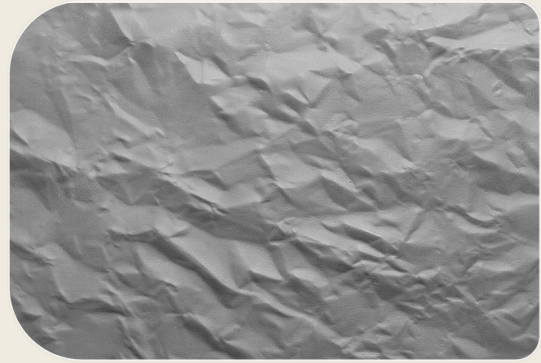


# KODERUS 2IN1 PANEL THICKNESS AND WEIGHT



F1 (Smooth surface)

Weight: ~11 kg / Thickness: ~10 mm



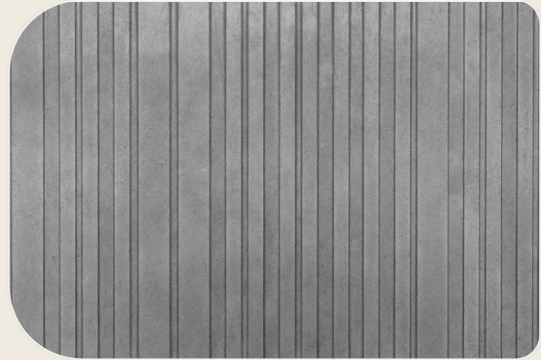
F2 (Crumpled paper)

Weight: ~13,5 kg / Thickness: ~20 mm



F3 (Horizontal lines)

Weight: ~13,5 kg / Thickness: ~19 mm



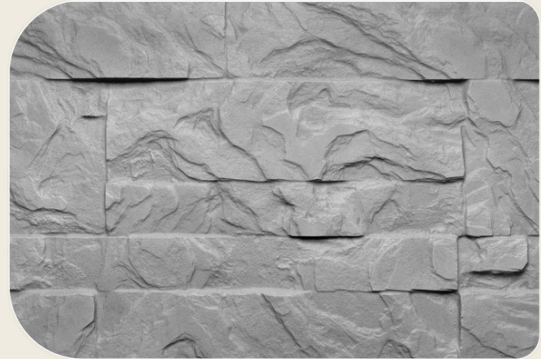
F4 (Vertical lines)

Weight: ~13,5 kg / Thickness: ~15 mm



F5 (Ribbed surface)

Weight: ~12kg / Thickness: ~11 mm



F6 (Split stone)

Weight: ~14 kg / Thickness: ~26 mm



F7 (Extended clinker brick facade)

Weight: ~18 kg / Thickness: ~35 mm



F8 (Brick imitation)

Weight: ~14 kg / Thickness: ~24 mm



+370 675 92183

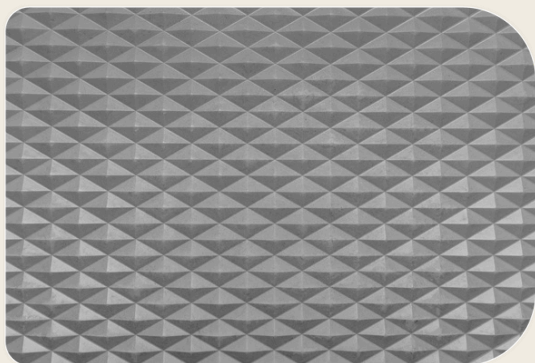


info@koderus.lt



www.koderus.com

# KODERUS 2IN1 PANEL THICKNESS AND WEIGHTS



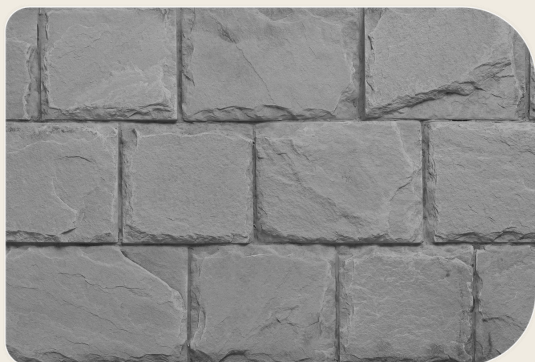
**F9 (Rhombuses)**

Weight: ~12,5 kg / Thickness: ~28 mm



**F10 (Klevų lapai)**

Weight: ~12,5 kg / Thickness: ~26 mm



**F11 (Weathered stone)**

Weight: ~16 kg / Thickness: ~26 mm



**F12 (Dense bubble lines)**

Weight: ~13 kg / Thickness: ~22 mm



**F13 (Sparse bubble lines)**

Weight: ~13 kg / Thickness: ~22 mm



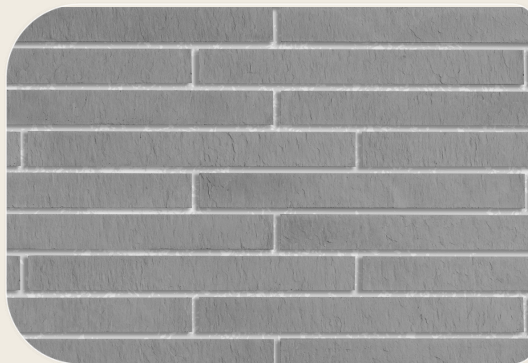
**F14 (Stone)**

Weight: ~19 kg / Thickness: ~30 mm



**F15 (Classic clinker)**

Weight: ~15 kg / Thickness: ~20 mm



**F16 (Modern clinker)**

Weight: ~10 kg / Thickness: ~15 mm



+370 675 92183



info@koderus.lt



www.koderus.com